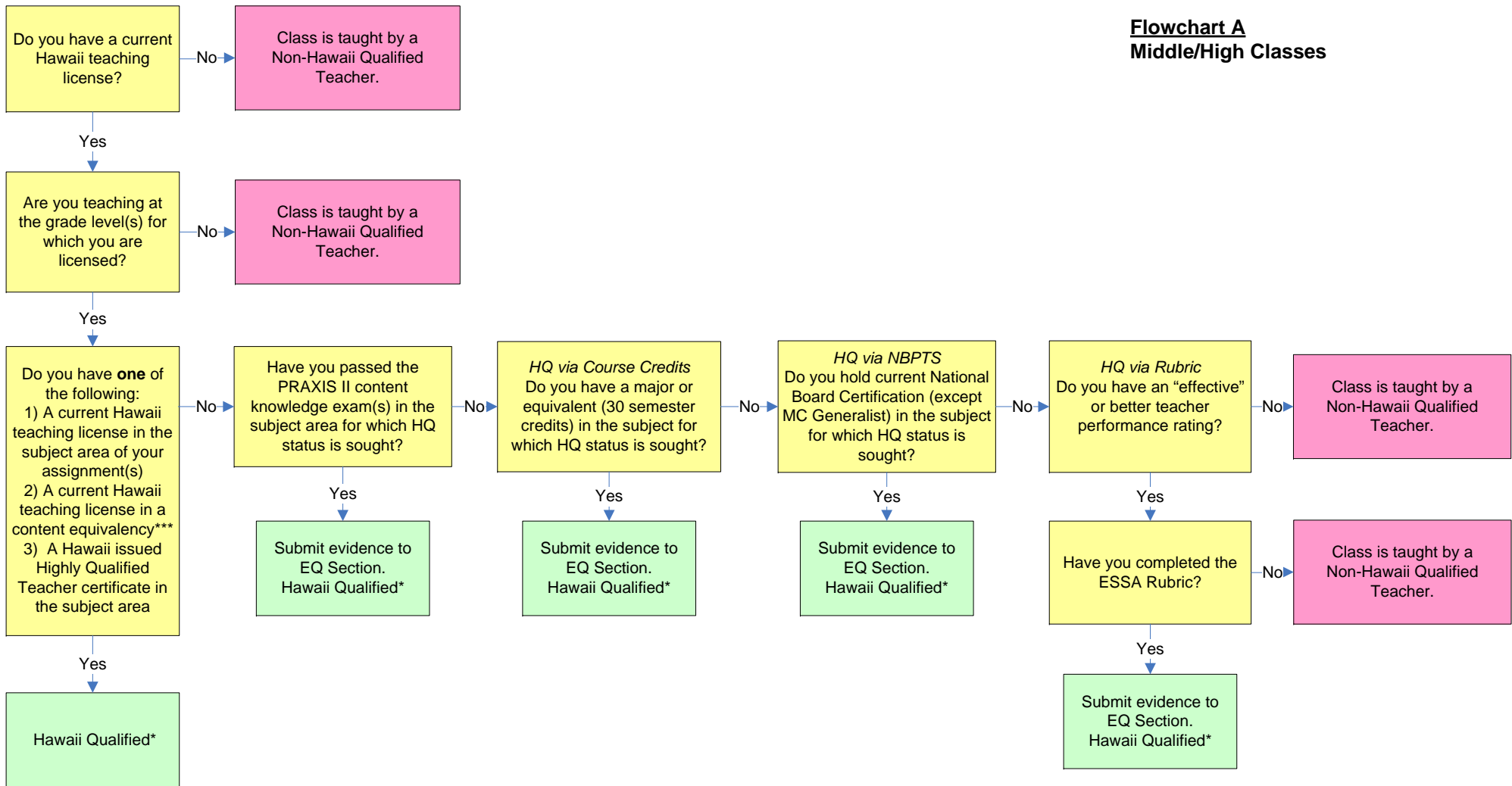


Hawaii Department of Education
The Pathway to Earning the HQ Designation

Flowchart A
Middle/High Classes



*Hawaii Qualified if all other requirements are met

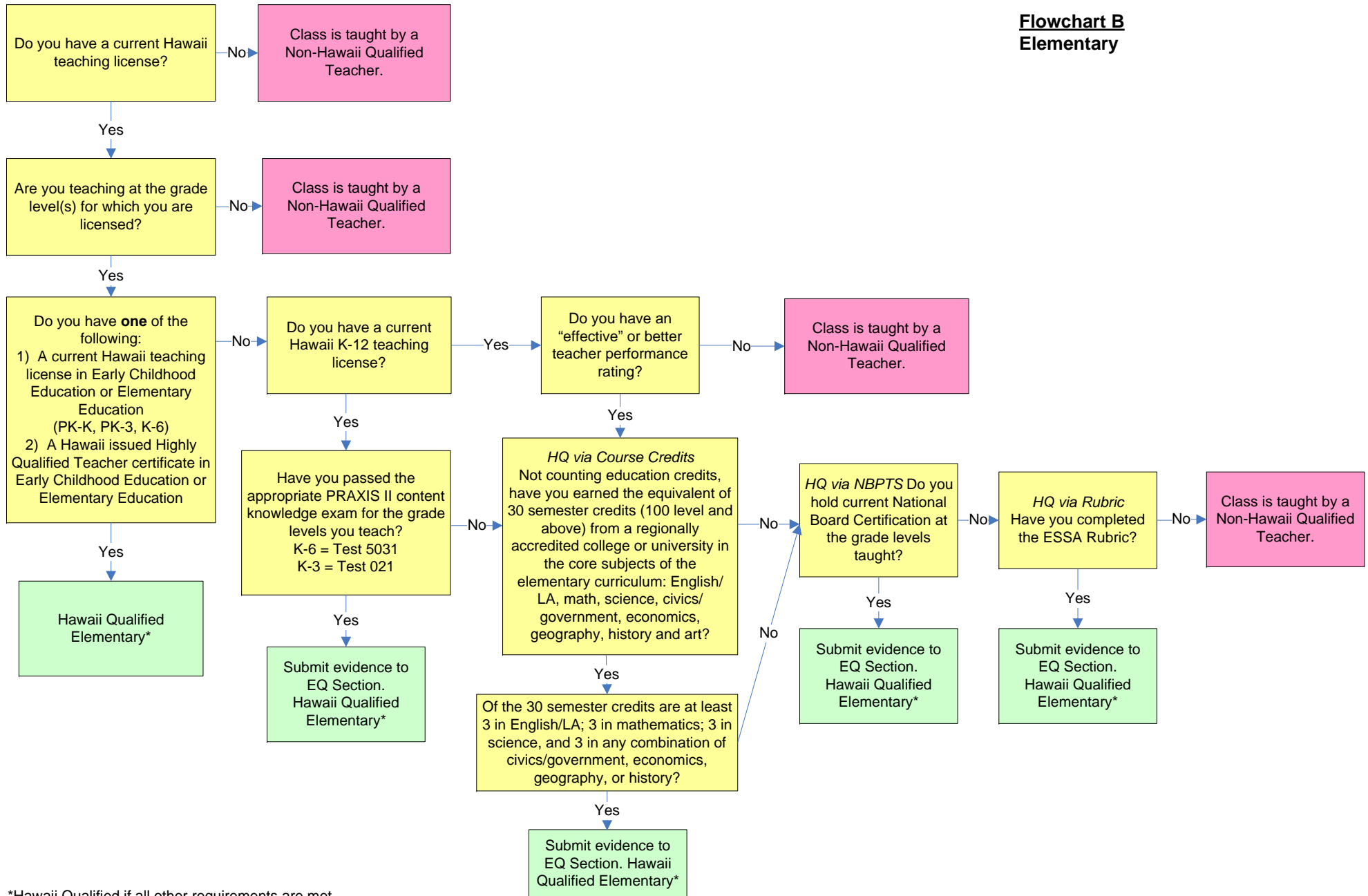
**For information on licensure, testing requirements, and options visit www.htsb.org

***See ACCN Crosswalk for a course-by-course listing of acceptable content equivalency licenses

If you need more information about HQ, visit the Educator Quality webpage at <http://hqt.k12.hi.us>

Hawaii Department of Education
The Pathway to Earning the HQ Designation

Flowchart B
Elementary



*Hawaii Qualified if all other requirements are met

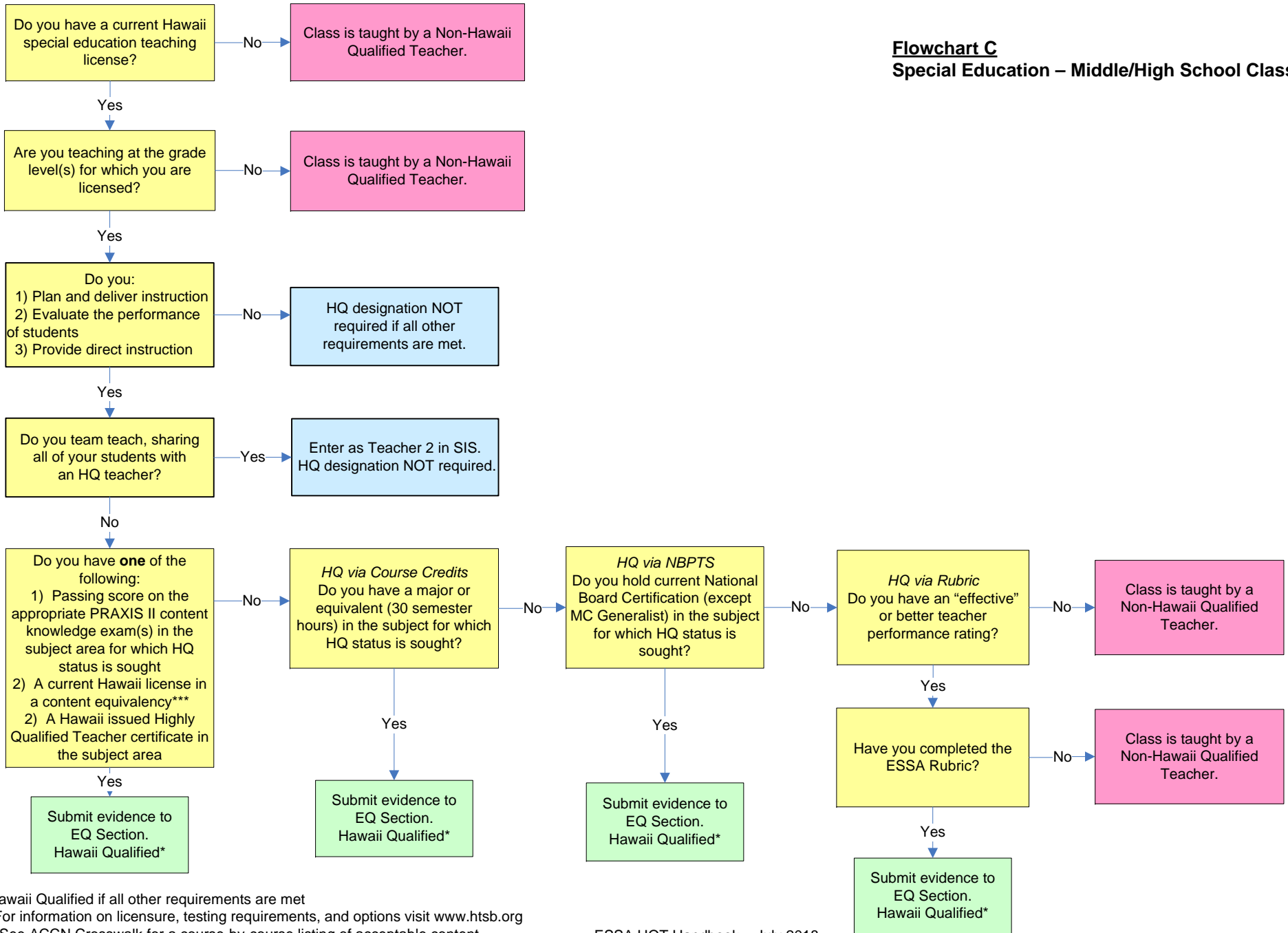
**For information on licensure, testing requirements, and options visit www.htsb.org

ESSA HQT Handbook – July 2018

If you need more information about HQ, visit the Educator Quality webpage at <http://hqt.k12.hi.us>

Hawaii Department of Education
The Pathway to Earning the HQ Designation

Flowchart C
Special Education – Middle/High School Classes



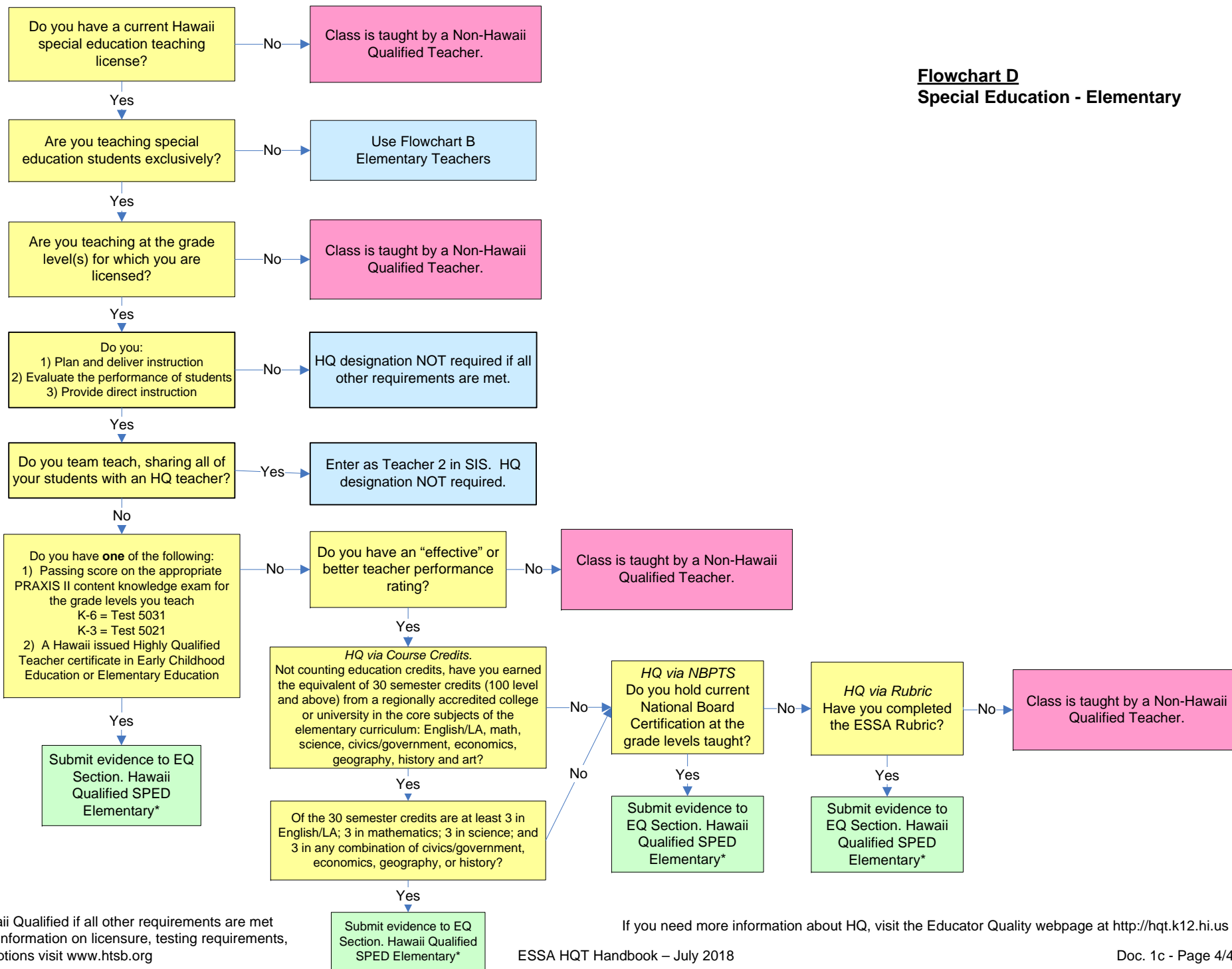
*Hawaii Qualified if all other requirements are met

**For information on licensure, testing requirements, and options visit www.htsb.org

***See ACCN Crosswalk for a course-by-course listing of acceptable content equivalency licenses

ESSA HQT Handbook – July 2018

Hawaii Department of Education
The Pathway to Earning the HQ Designation



Flowchart D
Special Education - Elementary

*Hawaii Qualified if all other requirements are met
**For information on licensure, testing requirements, and options visit www.htsb.org

If you need more information about HQ, visit the Educator Quality webpage at <http://hqt.k12.hi.us>