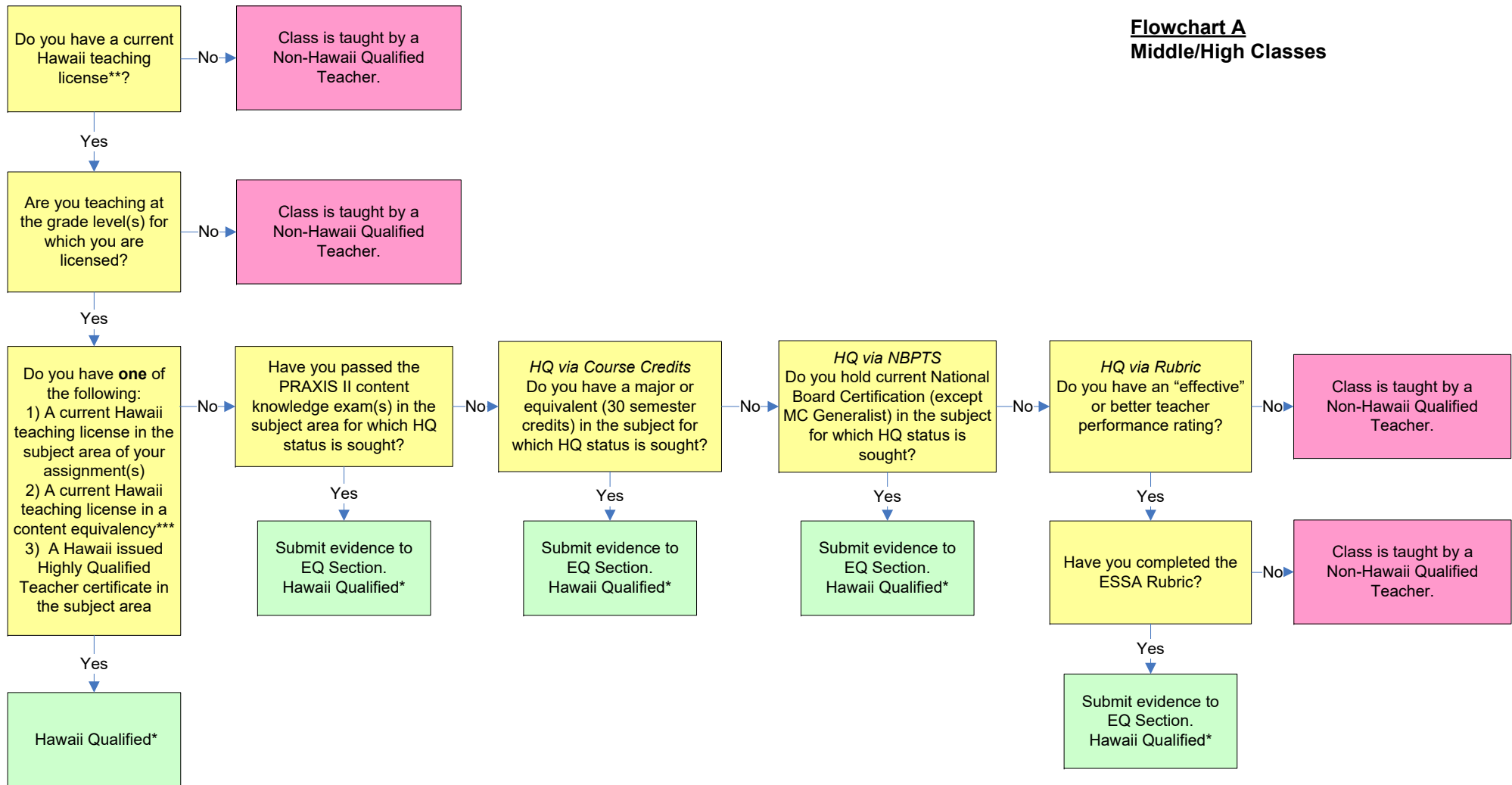


Hawaii Department of Education  
The Pathway to Earning the HQ Designation

**Flowchart A**  
**Middle/High Classes**



\*Hawaii Qualified if all other requirements are met

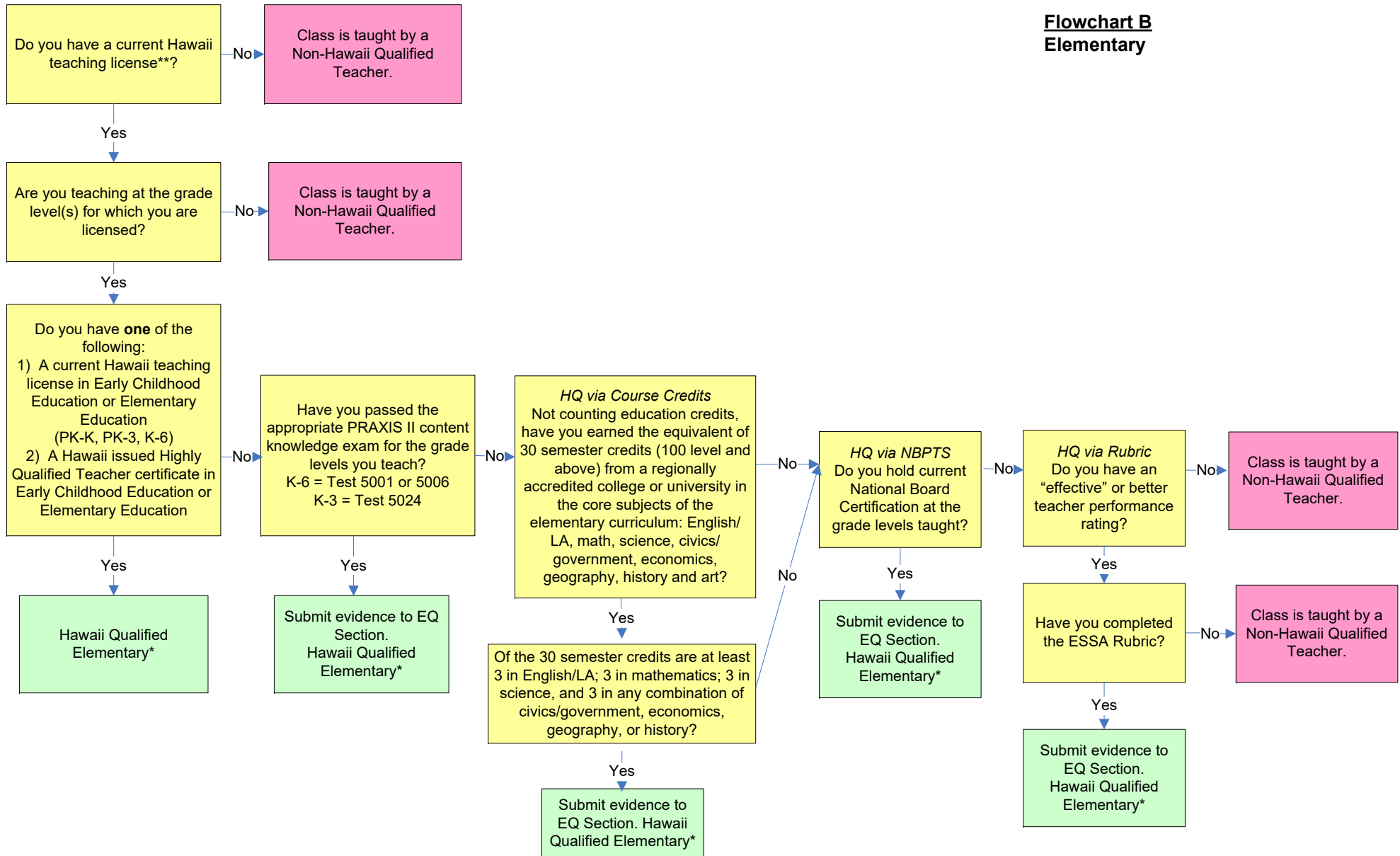
\*\*For information on licensure, testing requirements, and options visit [www.htsb.org](http://www.htsb.org)

\*\*\*See ACCN Crosswalk for a course-by-course listing of acceptable content equivalency licenses

If you need more information about HQ, visit the Educator Quality webpage at <https://hidoeotm.org/eq>

Hawaii Department of Education  
The Pathway to Earning the HQ Designation

**Flowchart B**  
**Elementary**



\*Hawaii Qualified if all other requirements are met

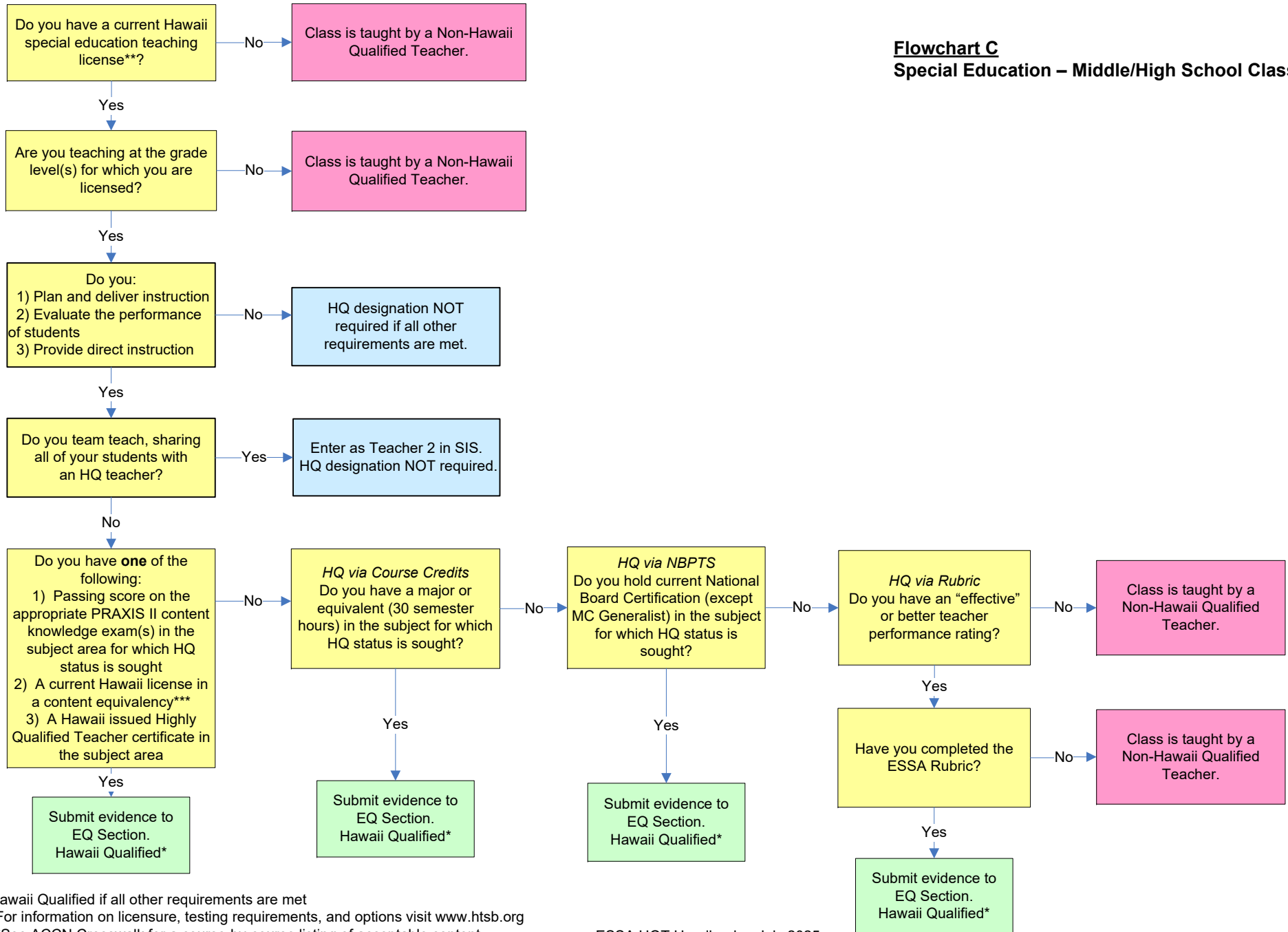
\*\*For information on licensure, testing requirements, and options visit [www.htsb.org](http://www.htsb.org)

ESSA HQT Handbook – July 2025

If you need more information about HQ, visit the Educator Quality webpage at <https://hidoeotm.org/eq>

Hawaii Department of Education  
The Pathway to Earning the HQ Designation

**Flowchart C**  
**Special Education – Middle/High School Classes**



\*Hawaii Qualified if all other requirements are met

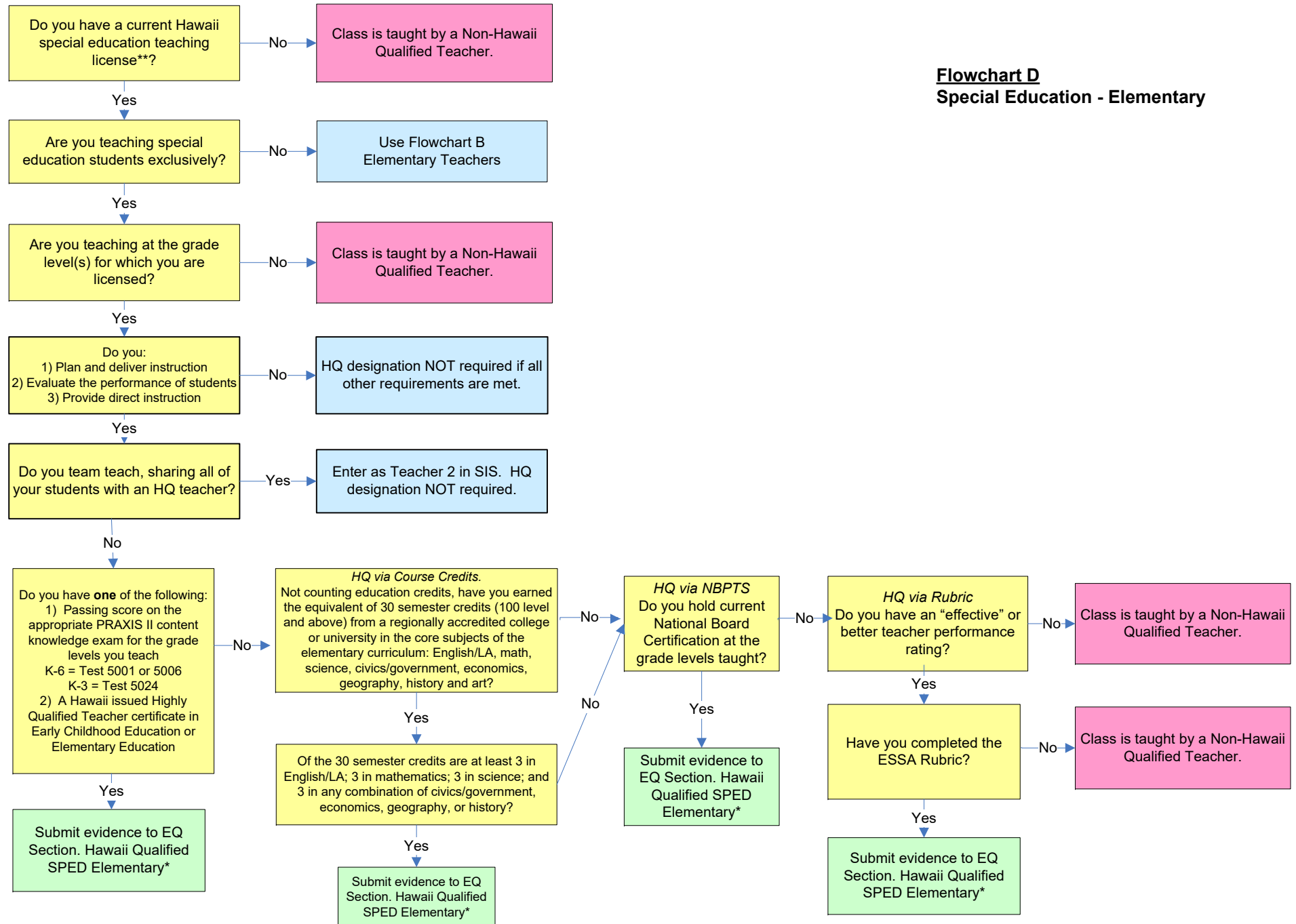
\*\*For information on licensure, testing requirements, and options visit [www.htsb.org](http://www.htsb.org)

\*\*\*See ACCN Crosswalk for a course-by-course listing of acceptable content equivalency licenses

ESSA HQT Handbook – July 2025

If you need more information about HQ, visit the Educator Quality webpage at <https://hideoetm.org/eq>

Hawaii Department of Education  
The Pathway to Earning the HQ Designation



\*Hawaii Qualified if all other requirements are met  
\*\*For information on licensure, testing requirements, and options visit [www.htsb.org](http://www.htsb.org)

If you need more information about HQ, visit the Educator Quality webpage at <https://hidoeotm.org/eq>