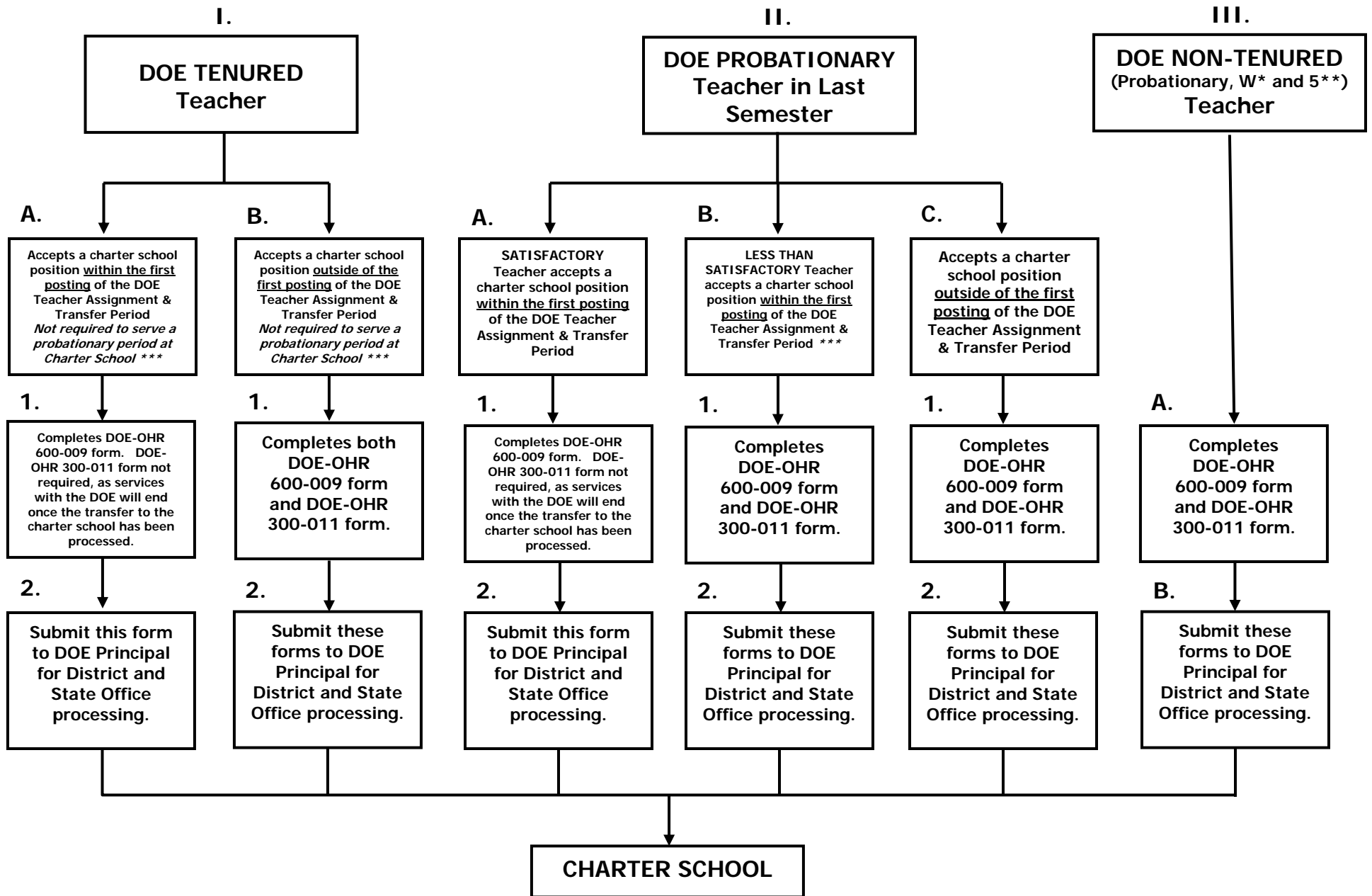


ATTACHMENT A

DOE TEACHER ACCEPTING A CHARTER SCHOOL TEACHER POSITION



* W's are teachers who have completed a teacher education program but have not completed all PRAXIS examinations.

** 5's are teachers who have not completed a teacher education program.

*** Per Act 298: Tenured department licensed teachers shall not be required to serve a probationary period at Charter School.